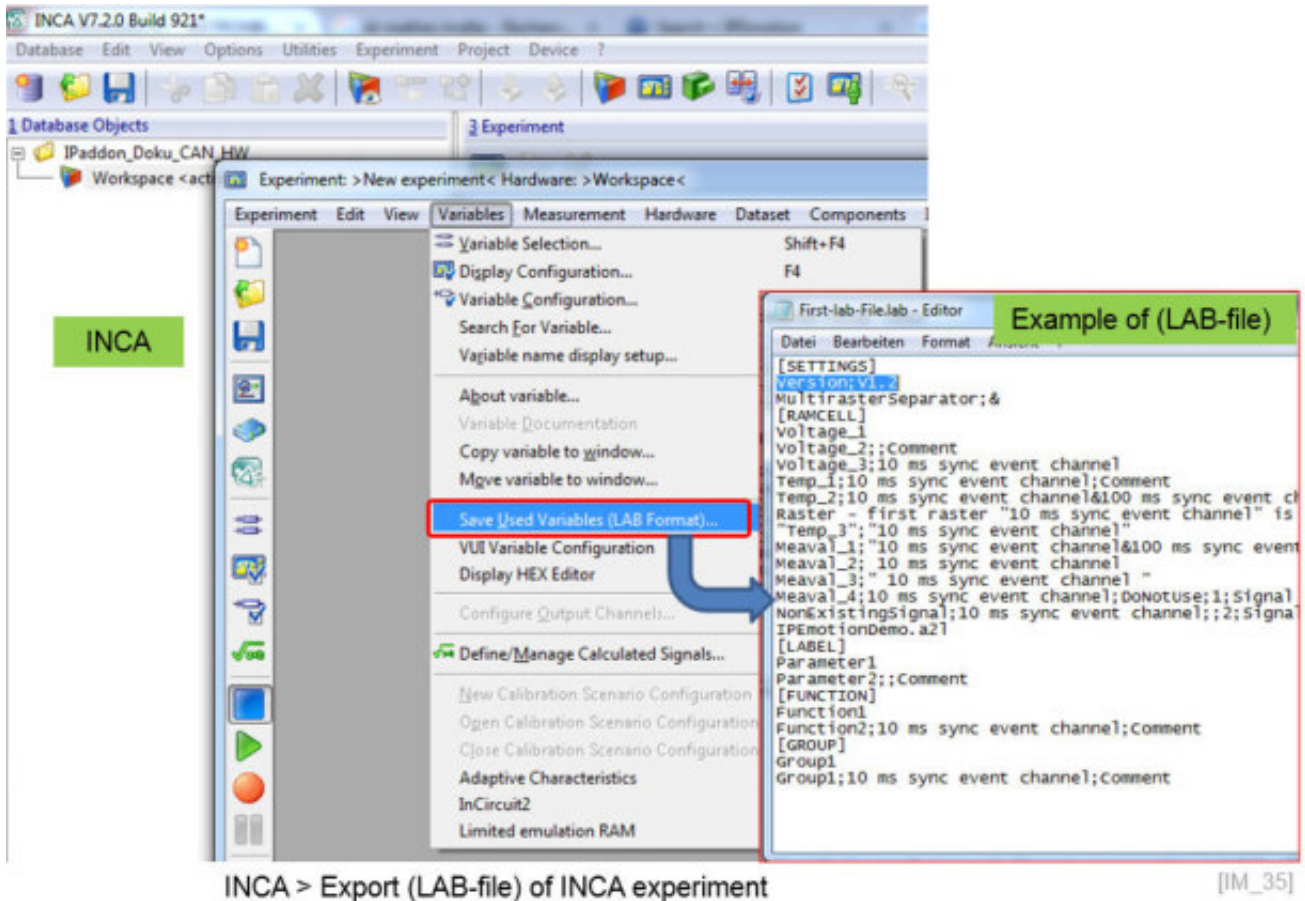
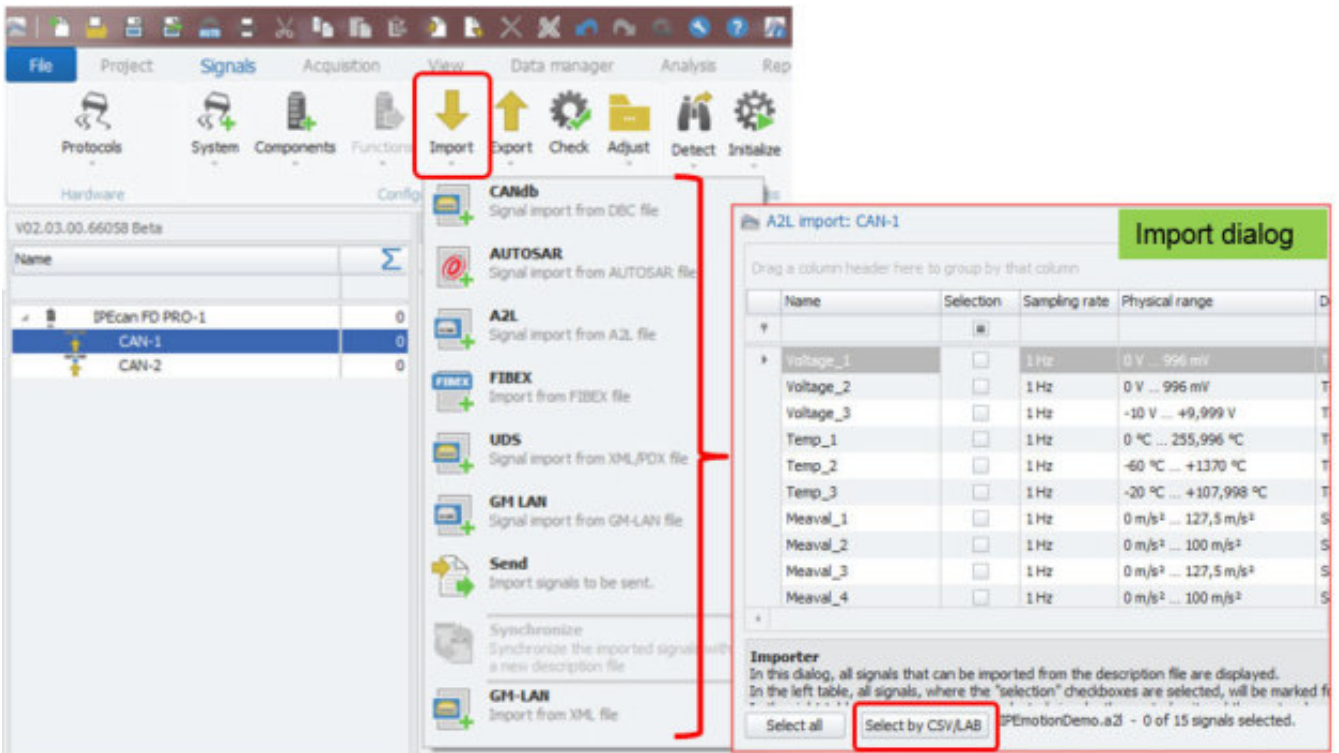


12.9 Description file import with INCA LAB file

To support the workflow between INCA and IPEmotion measurements an INCA experiment (LAB-file) import is supported besides the CSV import. You can save part of your INCA experiment in the LAB file format. This LAB file can be used to create easily the same measurement configuration for IPEmotion.

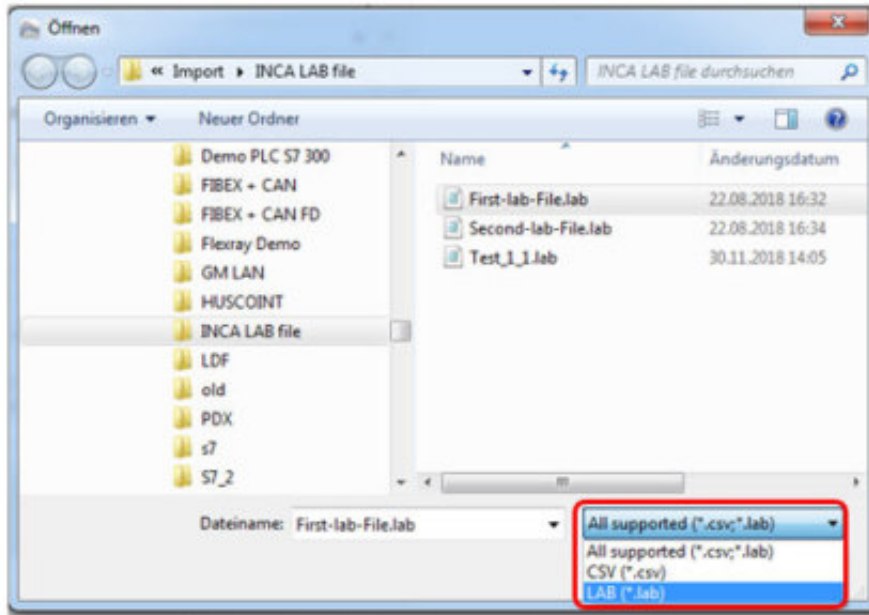


All description file imports on all Plugins support the CSV and LAB file filter.



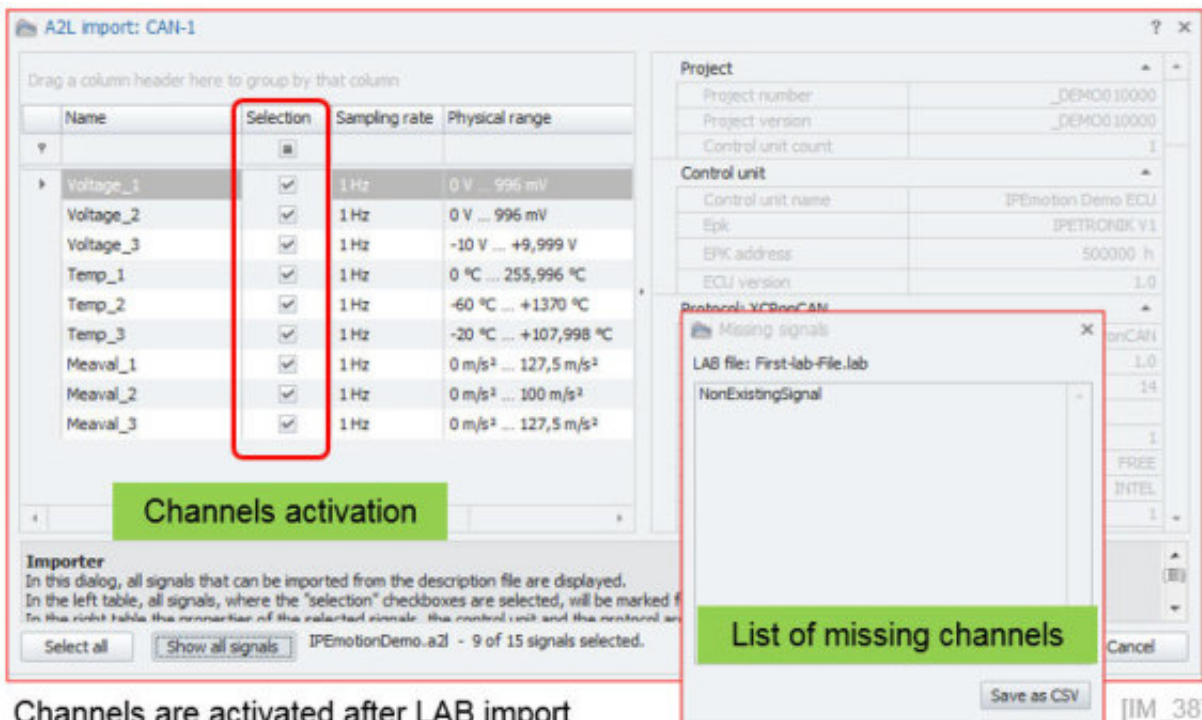
All IPEmotion description file imports support CSV / LAB filters for channel selection [IM_36]

After you have imported your complete description file you can use the CSV and LAB reference to select only those channels which are relevant for your measurement application.



Example: Select LAB-file for channel activation [IM_37]

When the LAB file was selected the associated channels from the description file are automatically activated in the import dialog. A message box is also returning all channels which are included in the LAB-file and missing in the description file.



Channels are activated after LAB import