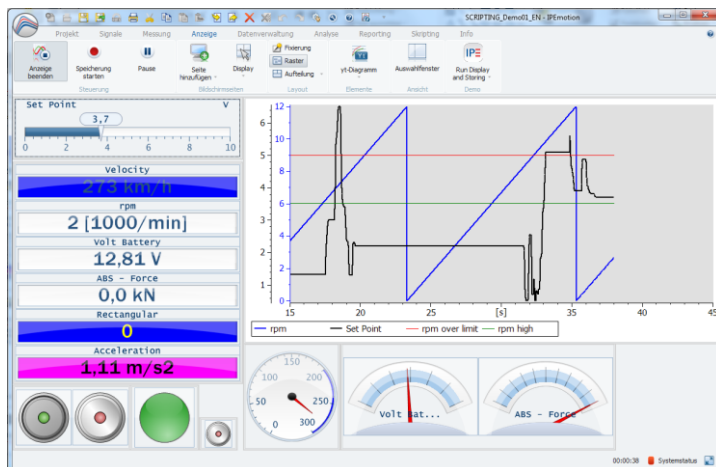




IP^EMOTION



technikmedia engineering

Ingenieurbüro für technische Medien
Dipl.-Ing. Dietmar Neumann
Am Homberg 13 B
45529 Hattingen
Germany

Tel.: 02324 34 44 792

Fax: 02324 34 44 793

Email: info@technikmedia.de

Internet: www.technikmedia.de

IPEmotion

IPEmotion is a modern standard software for data acquisition, measurement and reporting. The open plug in concept of IPEmotion supports any hardware. The IPEmotion interface also allows client-specific adjustments.

General

The OPC PlugIn for IPEmotion is an interface to an OPC server for reading OPC variables according to the IPC DA specification.

System Requirements

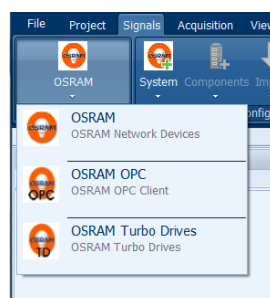
An IPEmotion installation of Version 3.01.02 or higher is required. Also a runtime version of Visual Studio C++ 2010 is needed. If the runtime version is not installed, the setup program of the plug in will install it. You have to confirm the Microsoft license agreement.

Installation

Execute the setup program and follow the instructions

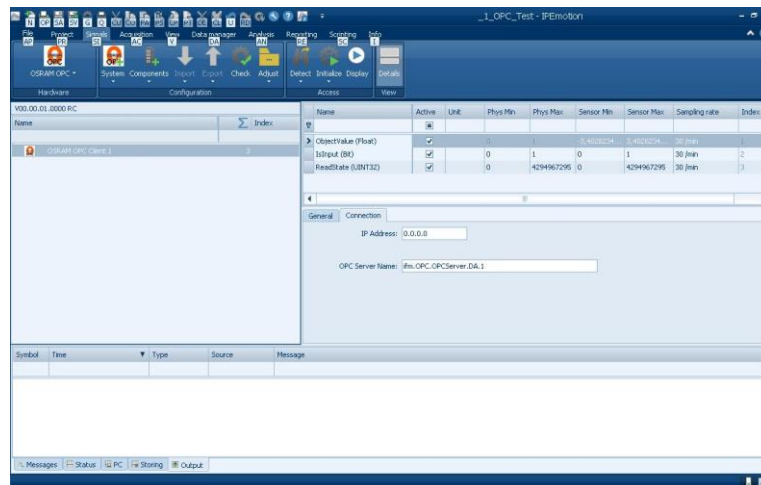
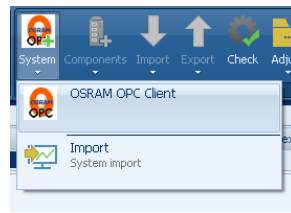
Working with the OPC Plug In

The first step to create an OPC project is selecting the OPC configuration. You will find it under **Hardware** as **OPC**.



If you don't find it, you have to activate the plug in in the IPEmotion options (see IPEmotion documentation).

After selecting **OPC** you have to select the **OPC Client** in the system box. Now you have a new OPC client in the list of available systems.



To connect the OPC Client system to an OPC server enter the IP address and the OPC server name under tab **Connection**. If the OPC server runs on your local computer the IP address is 0.0.0.0.

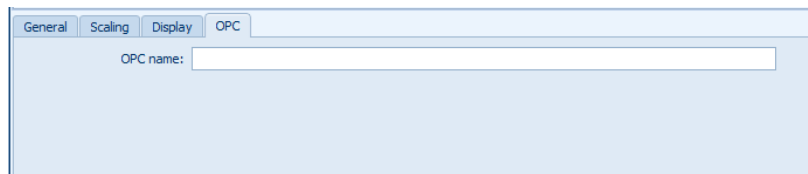
Under tab **General** you can define the sample rate. By default it is set to 1 Hz.

Attention: The plug in polls the values with the sample rate. Be sure your OPC server is able to send the data with this rate!

When creating an OPC Client System also the first OPC variable in IPEmotion with the name **OPC Value** is created. Other variables can be added by selecting new items in the **Components** selection.

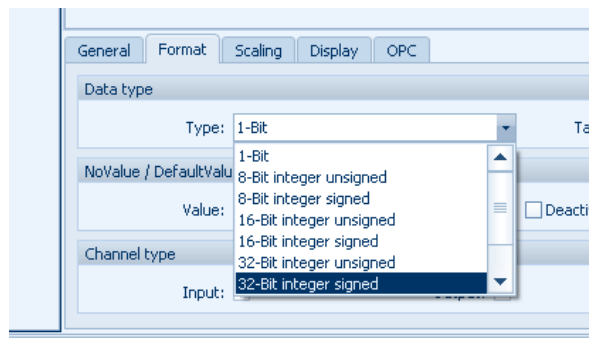


In the tab **OPC** you have to enter the OPC name of the variable given in the OPC server. (Example: ifm.VSE.VSE100.Monitoring.Objects.Object01.ObjectValue)



Also you have to define the type of the variable. In tab Format you can select one of the following types:

- 1-Bit (logical value)
- 8-Bit integer unsigned
- 8-Bit integer signed
- 16-Bit integer unsigned
- 16-Bit integer signed
- 32-Bit integer unsigned
- 32-Bit integer signed
- 32-Bit floating point
- String



Attention: The type of the variable in IPEmotion and the type in the OPC server have to be the same!