



Technische Information

Produkt: *Gantner Instruments IPEmotion Plugin*

Datum: 17.10.10

Generell:

The Gantner Instruments plugin can be use for all Gantner Instruments controllers types from the e. series with hardware version V3 and all controller types from the Q.series.

Actual released plugin version while the documentation was developed:

Plugin: 01.00.06

Actual released IPEmotion version while the documentation was developed:

IPEmotion: V03.00.00 Build 25770

The configuration for the Gantner Instruments controller is been made regular with test.commander. The configured channels could be scanned and downloaded inside IPEmotion.

A further changing of the configuration with the test.commander must follow a new scanning process over IPEmotion. The configuration of Gantner Instruments Hardware over the IPEmotion Software is not possible.

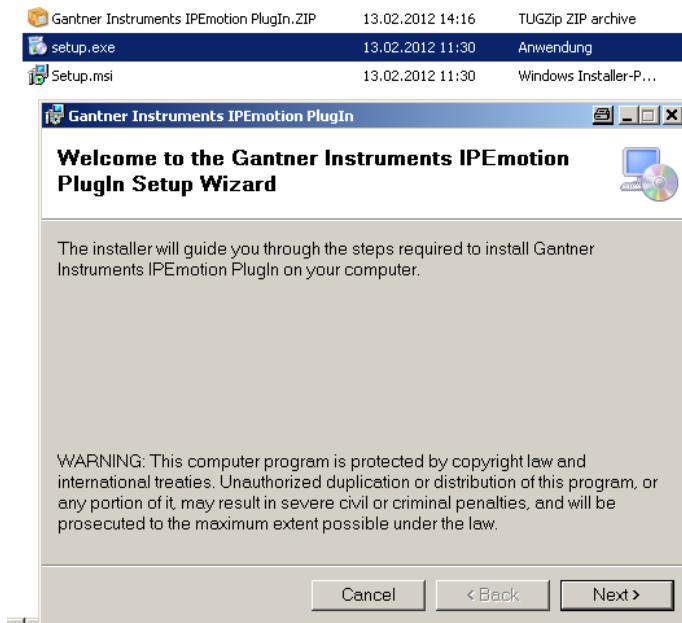
- 1.) How to install the Plugin
- 2.) Add/Scanning a new controller
- 3.) Scanning for Q.station with two buffers.



How to install the Plugin

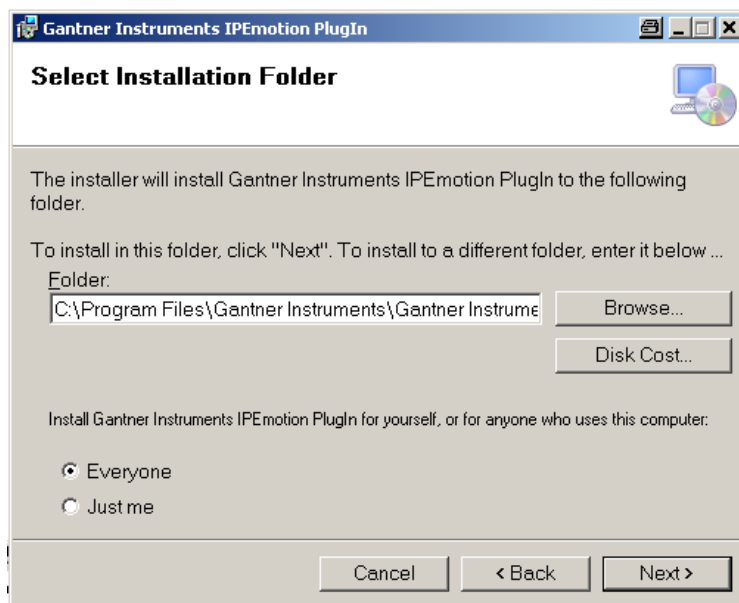
An IPEmotion Software have to be installed before installing the Gantner Instruments plugin. It is possible to have different IPEmotion versions on the PC. After install the plugin it will be available in all other Software versions as well. The plugins will be available automatically even after deinstall all version and install a new software version.

- 1.) Please unpack the .zip file and activated the installing Wizard while doing a double click on the setup.exe.



Please click the button "Next".

- 2.)



The plugin can install in a different directory that is suggested in teh next window.

Gantner Instruments Test & Measurement GmbH

Silvrettastr. 11-13 A-6780 Schruns,
Tel. +43 5556 - 73784 - 410
Fax +43 5556 - 73784 - 419
office@gantner-instruments.com

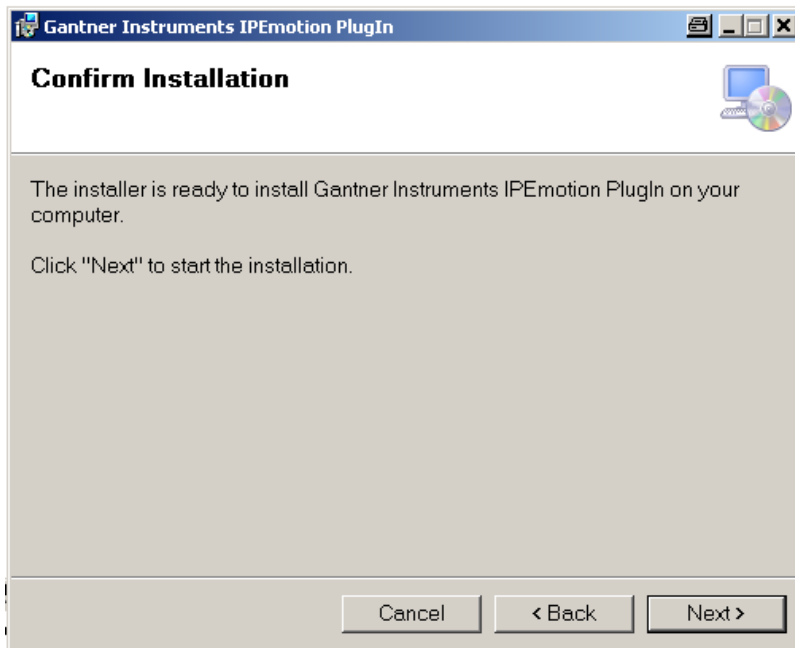
Heidelberger Landstr. 74 D-64297 Darmstadt
Tel. +49 6151 - 95136 - 0
Fax +49 6151 - 95136 - 26
testing@gantner-instruments.com

www.gantner-instruments.com



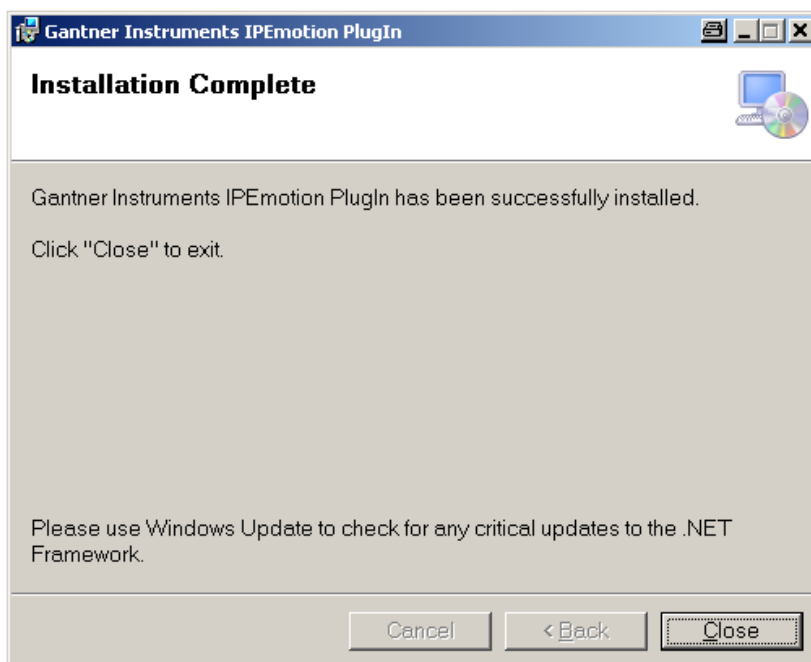
We suggest you to install the plugin at the suggested directory.
After choosing the right directory please use the button "Next".

3.)



Please choose the Button „Next“.

4.)



Please choose the button "Close". The installation is complet.

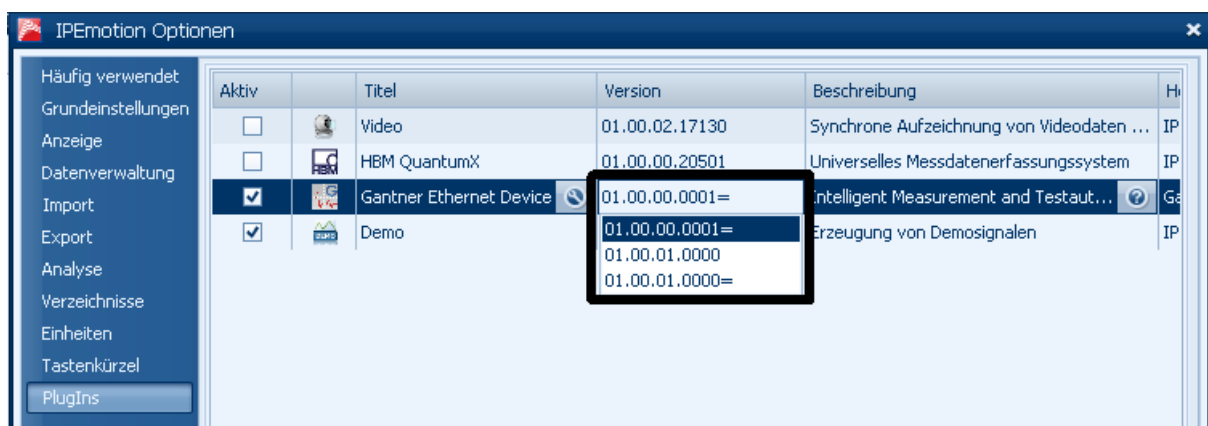


If the same plugin version was installed before the installation routine will stop.

The predecessor of the Gantner Instruments plugin versions are all available even when a new one is installed. An older plugin version is not deleted while installing a newer plugin versions.

5.)

Please look after installing if inside IPEmotion your already installed plugin version is available.



Please choose here the newest plugin.

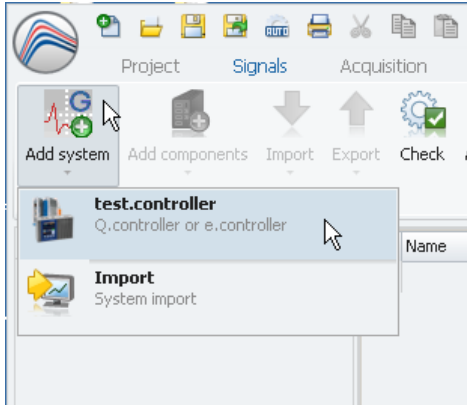
Newer plugins will be available inside on the IPEmotion internet side and will be costless. Normally two or one time a year a new plugin will be available. It is counts are depending on the growing functionality of the Gantner Instruments hardware, bugs or customer requests.

Information about new plugins will reach you over our Newsletter, internetside or all existing distributors.



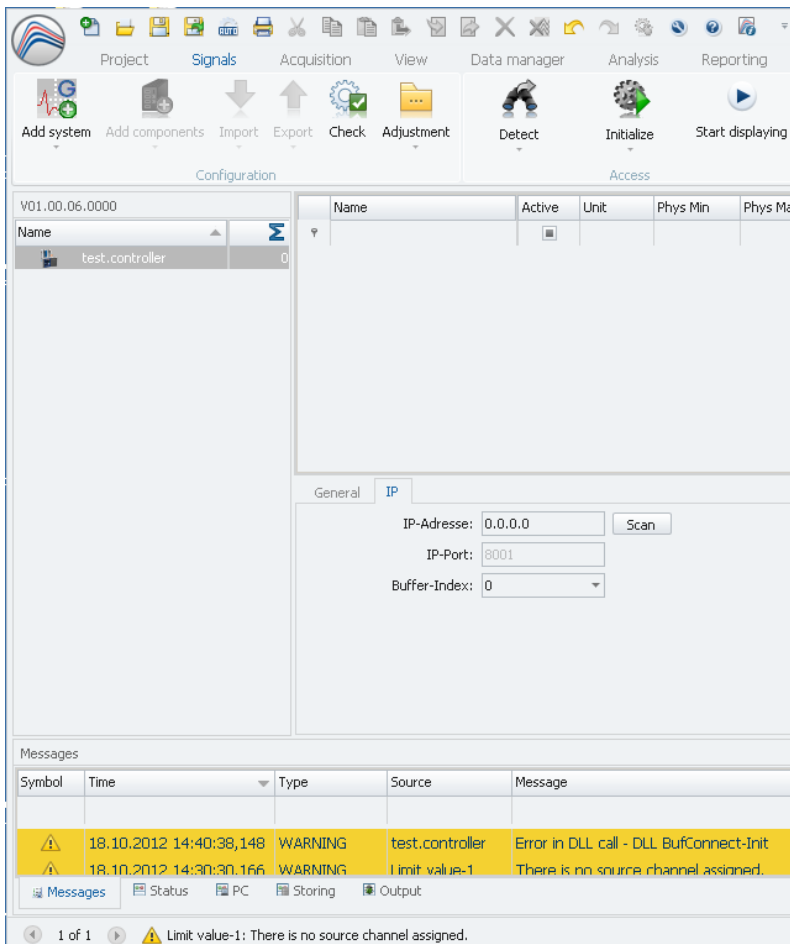
Adding a controller

- 1.) Please start IPEmotion.
- 2.) Chosse the registercard "Signals".
- 3.) Push the button "Add Systems".



- 4.) Please push the sub setting "test.controller".

Now is the test.controller visible on the left side. Please choose the register card IP.



- 5.) Choose the register card "IP" at the bottom of the window.

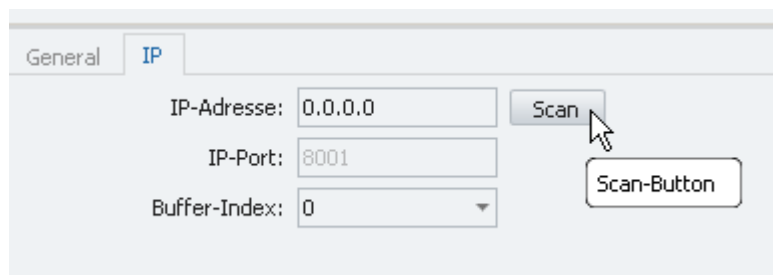
Gantner Instruments Test & Measurement GmbH

Silvrettastr. 11-13 A-6780 Schruns,
Tel. +43 5556 - 73784 - 410
Fax +43 5556 - 73784 - 419
office@gantner-instruments.com

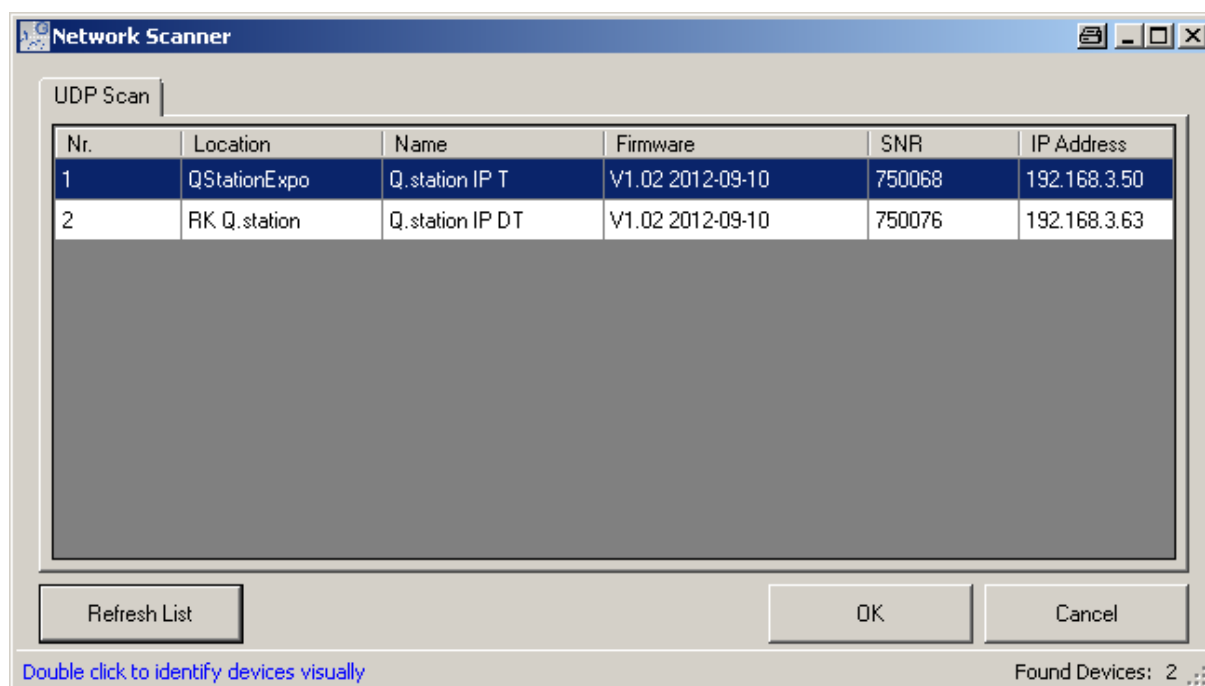
Heidelberger Landstr. 74 D-64297 Darmstadt
Tel. +49 6151 - 95136 - 0
Fax +49 6151 - 95136 - 26
testing@gantner-instruments.com



6.) Push the button “Scan” for searching the new controller.

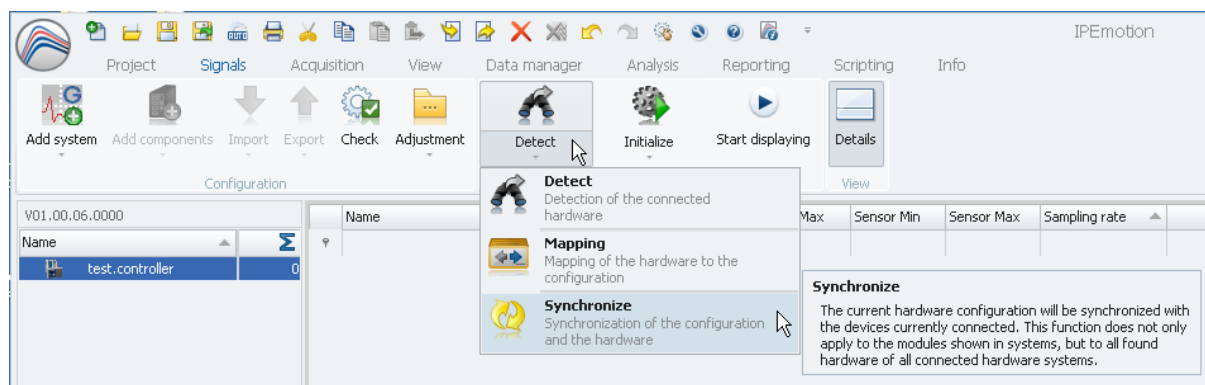


The found controller will be visible.



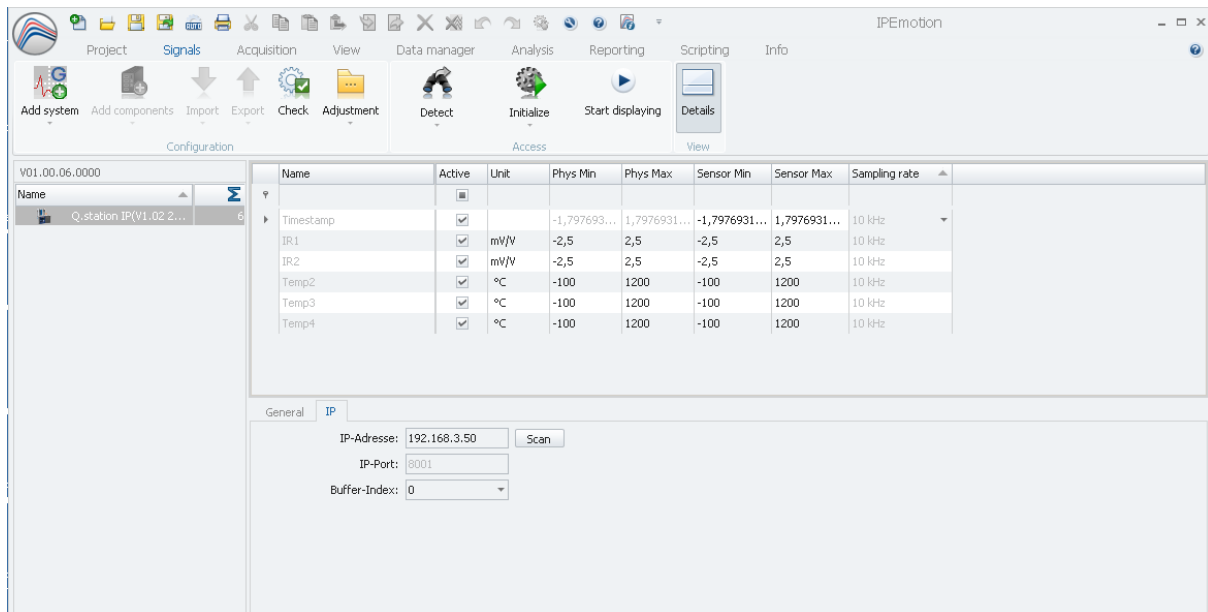
7.) Choose the wished controller and pull the button “OK”.

8.) Now the wished controller is chosen. For read in the channel configuration the button “Detect/Synchronize” has to be chosen.





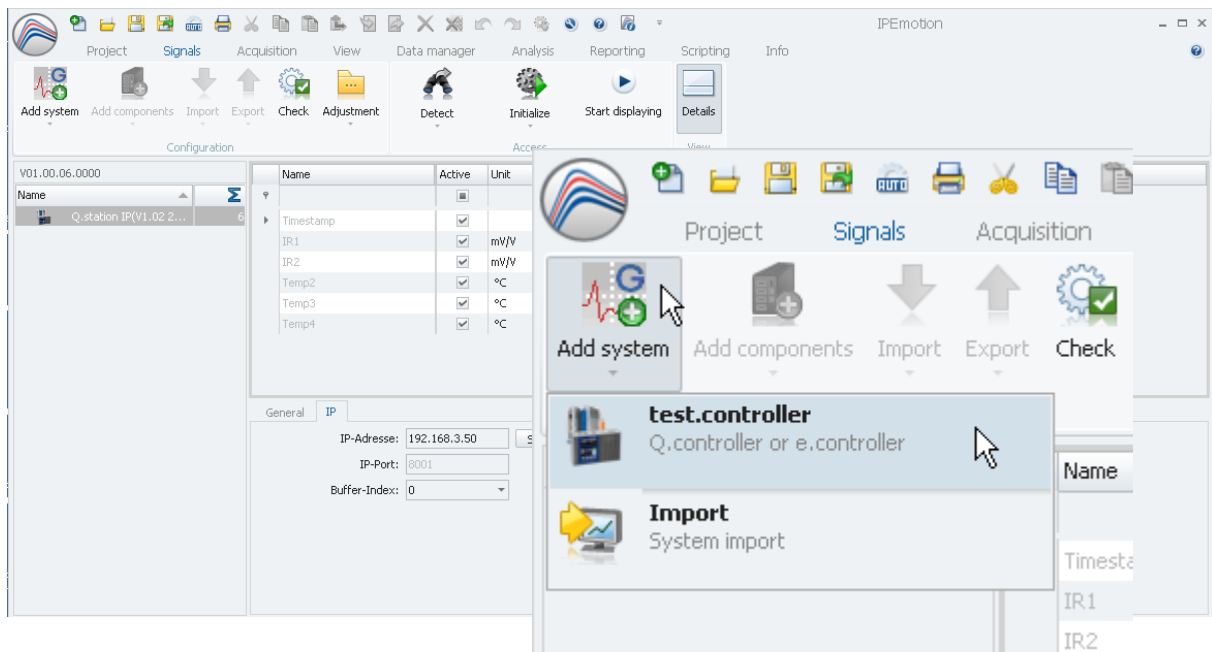
9.) The channel configuration is been visible inside IPEmotion.



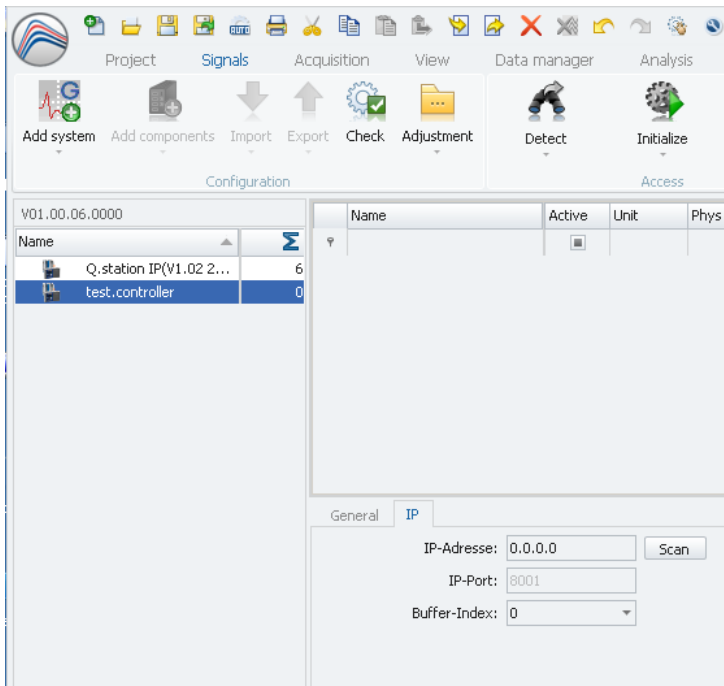
Adding a second controller to the existing configuration

A new controller could be load inside an existing configuration.
This could be done like adding the first controller (Please see point Nr.1).

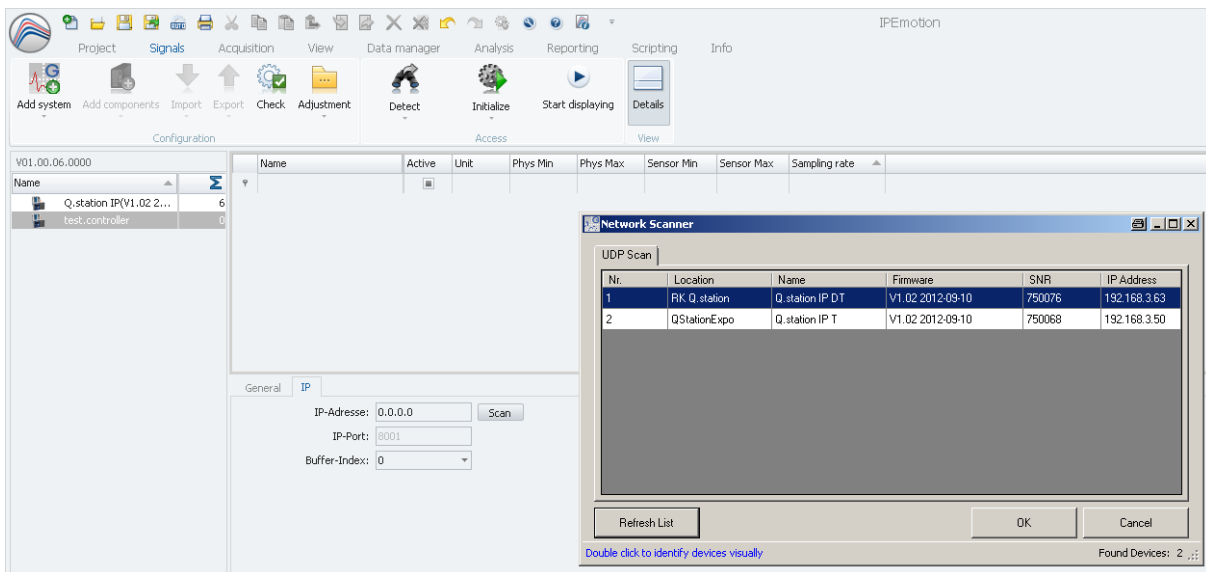
1.)Add system/test.controller...



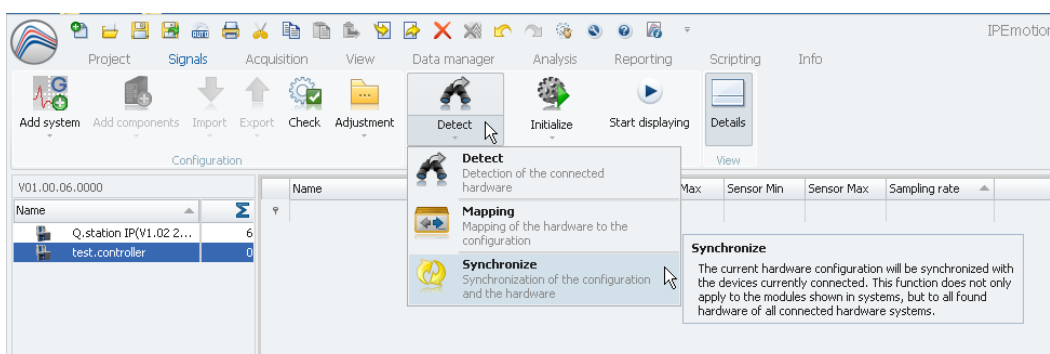
2.) After that a new controller will appear at the left side from the window.



3.) By pushing the button “Scan” the new controller could be chosen.

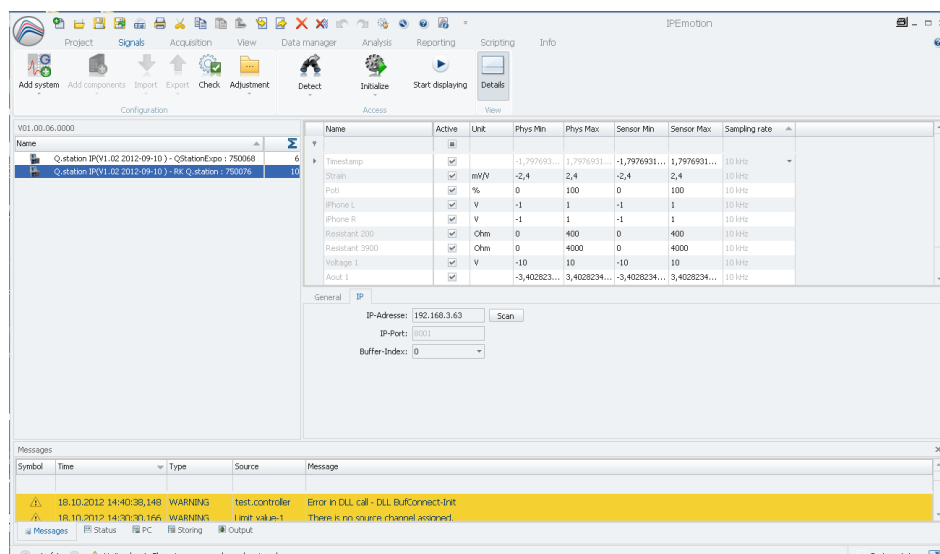


4.) After doing the synchronization, the both controllers are visible...





...in the next window.

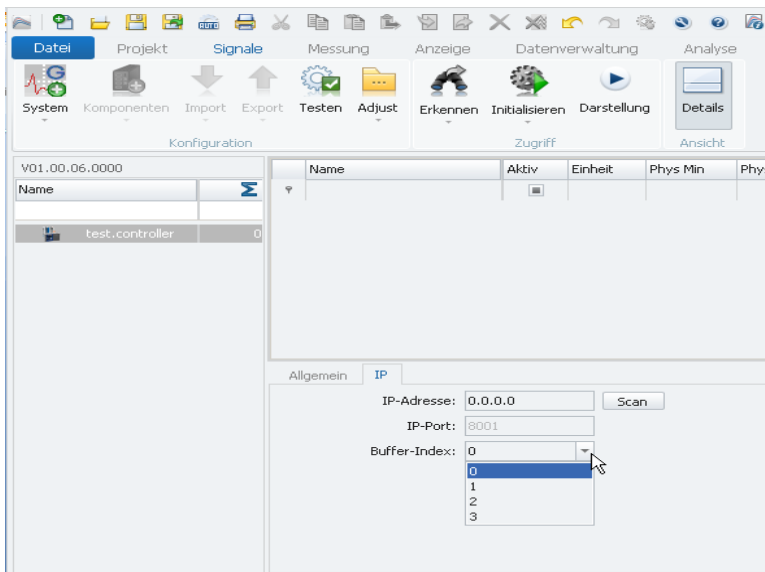


Scanning for a Q.station with two Buffers

Inside the Q.station could be configured four buffers. Every ringpuffer could sample the datas with a different speed and each channel could be selected to another ringpuffer. This situation makes it possible to creat groups of channels with a high and low measurement rate in the controller

While using IPEmotion each ringpuffer could be read out.

During the scanning process the ringpuffer could be selected.



These four Buffer correspond to the buffer inside the test.commander.

