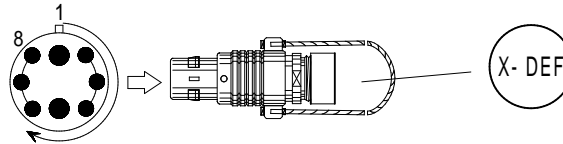


X-Link Module DEFAULT-Plug

Bestell-Nr. X-Link-DEF
 Order-N^o

X-Link DEF

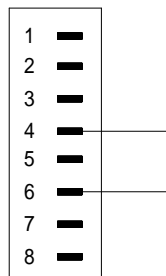


It is the system default plug.

How to use:

Plug the stick, than power on the X-device, wait 10 seconds, remove the power and the Mx-Def-Plug

LEMO 1B,2+6-pol./P



Contact Type / Kontaktart
P = Pin contacts / Stiftkontakte
S = Socket contacts / Buchsenkontakte