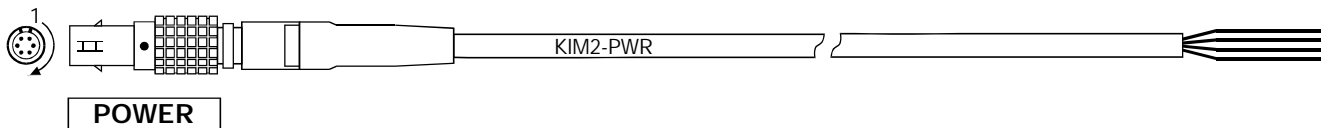


# KIM2-POWER Kabel OFFEN KIM2-POWER Cable OPEN



Bestell-Nr.  600-976.005 ( 0,5 m)     600-976.050 ( 5,0 m)  
 Order-Nr.  600-976.015 ( 1,5 m)     600-976.100 (10,0 m)  
                    600-976.030 ( 3,0 m)     600-976.

## 600-976.



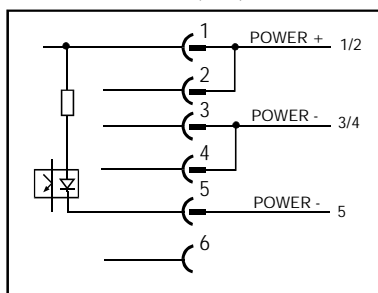
### Anschlußbelegung / Connection

Lemo-Stecker 1B, 6-pol. (rot)  
 Lemo-male 1B, 6-pol. (red)

Pin-Nr. Pin-NO	Bezeichnung Designation	Litze-Nr. / Farbe Wire-NO / Colour
1	Power +	1/2 red
2	Power +	
3	Power GND	3/4 black
4	Power GND	
5	SER IN	5 white
6	SER OUT	
Chassis	Shield	

### Anschlußbeispiele / Connection examples

KIM2 Masterbetrieb (KIM)  
 KIM2 Master Mode (KIM)



KIM2 Slavebetrieb (SIM)  
 KIM2 Slave Mode (SIM)

