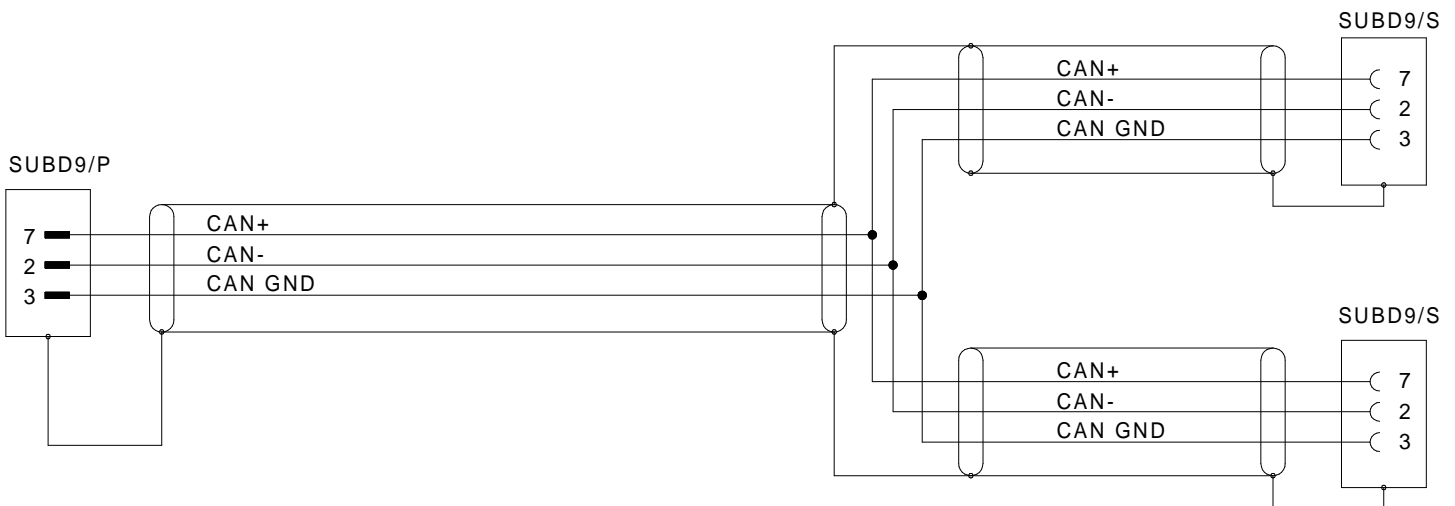
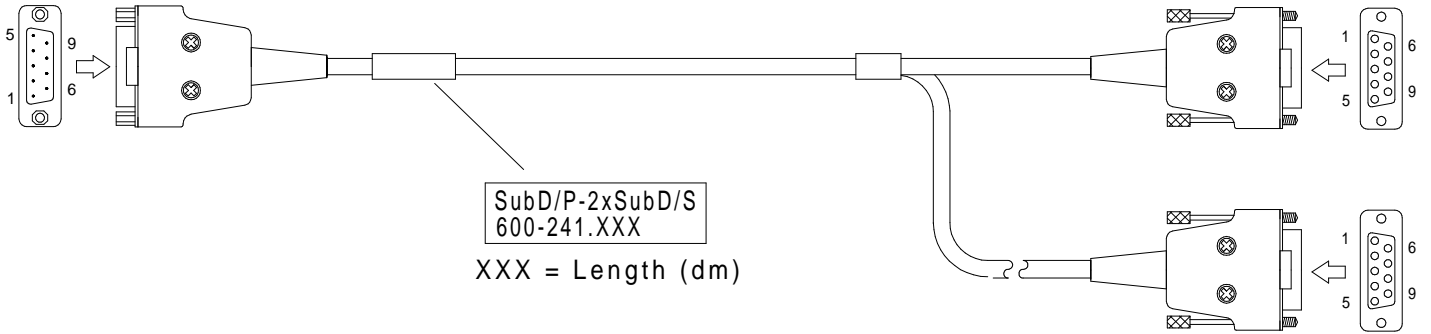


# SubD9/P Kabel 2xSubD9/S

## SubD9/P Cable 2xSubD9/S

Bestell-Nr.  600-241.005 (0,5m)  600-241.050 ( 5,0m)  
 Order-N<sup>o</sup>  600-241.015 (1,5m)  600-241.100 (10,0m)  
 600-241.030 (3,0m)  600-241.

# 600-241.



**Contact Type / Kontaktart**  
**P** = Pin contacts / Stiftkontakte  
**S** = Socket contacts / Buchsenkontakte